

San Pedro & Peninsula

Visitor

October 2022

Spooky Deadman's Island

What to See & Do

Where to Dine

Where to Shop



All About October

In This Issue

4 Spooky Deadman's Island

6 Calendar of Events

10 Best Dining Around San Pedro & the Peninsula

11 The Directory

Harvest-Themed Sail on a Tall Ship

The Harvest Sail on one of **Los Angeles Maritime Institute's** tall ships will take place Saturday, October 22 from 5 to 7:30 p.m.

The vessels are the City of Los Angeles' Official Tall Ships & Maritime Ambassadors.

You can help pull a line if you want, or just sit back and enjoy the views of Los Angeles Harbor and the sunset.

For information, call 833-6055 or visit www.LAMITopSail.org. The cost is \$60 for adults and \$30 for children.

San Pedro & Peninsula Visitor

Volume 8 Number 10

October 2022

San Pedro & Peninsula Visitor is published monthly with combined issues in July & August and November & December by Visit San Pedro, the independent tourism authority serving San Pedro, the Los Angeles Harbor and Palos Verdes Peninsula communities, and Catalina Island. Visit San Pedro is a division of SoCal ETC.

Offices and Visitor Center

479 W. 6th Street, Suite 101, Downtown San Pedro
310-729-9828 www.VisitSanPedro.org

The Area's Best Family Halloween Event Is at the Cabrillo Aquarium

Bring the whole family for a big range of activities for Halloween at the "Into the Deep" themed Sea Scare. There are two nights available: Friday, October 28 and Saturday, October 29 from 7-10 p.m. each night.

Family friendly activities, including the Deep Sea Trick or Treat Trail, Haunted Maze, Skull Alley, The Abyss, the Deep Sea Party Zone, and Trunk or Treat are back. Come in costume, party with ghosts and ghouls, bring your own trick or treat bag for a raffle prize and enter to win the costume contest. And there will be food trucks.

Cabrillo Marine Aquarium is at 3720 Stephen M. White Drive, Cabrillo Beach, San Pedro Waterfront. 310-548-7562, www.CabrilloMarineAquarium.org.

Top Area Artists Selling at Show

The **Malaga Cove Art on the Lawn Show** will feature a full weekend of paintings, ceramics, photography, wearable art, and prints from artists of the eight art groups affiliated with the Palos Verdes Art Center.

The show will be held Saturday and Sunday, October 8 and 9 from 10 a.m. to 5 p.m.

The artists have been presenting their works for more than 40 years at this location and the diverse array of media and styles grows every year.

It's at Malaga Cove Plaza, located at the entrance to the City of Palos Verdes Estates on scenic Palos Verdes Drive West between Via Chico and Via Corta. There is plenty of free parking.

For more information, check at www.PVArtCenter.org.

More Than 40 Local Artists' Studios Will Be Open for Tour d'Art

Self-guided tours of artist studios located on the Palos Verdes Peninsula hosting more than 40 local artists on Friday, October 14 and Saturday, October 15. Refreshments at each location. Palos Verdes Art Center, 5504 Crestridge Road, Rancho Palos Verdes, Peninsula. www.TASPV.com.

Be sure to check for the latest information on modified operating hours and any special requirements for admission as the Health Department works to control COVID-19 outbreaks. Special information for travelers is available at www.PublicHealth.LACounty.gov/media/Coronavirus/traveladvisory.htm

Find your way around San Pedro and Los Angeles

There are lots of ways to get around.

The Downtown Trolley operates on weekends between the Cruise Terminal, 6th and 7th Streets, and Pacific Avenue, CRAFTED at the Port of Los Angeles, and a stop at Battleship Iowa.

DASH buses operate on routes throughout the greater San Pedro area, south as far as 25th Street and west to Western Avenue.

Commuter Express line 142 has direct service to the Downtown Long Beach Transit Gallery where you can catch the A Line train that travels to downtown Los Angeles and connects to most rail lines that run throughout the greater Los Angeles area.

Metro Transit buses operate several lines into, out of, and around San Pedro.

Connections to Metrorail are available from Downtown Los Angeles's Metro Center and some buses stop at rail stations along their routes.

The Palos Verdes Transit Authority provides bus services around the Palos Verdes Peninsula, to San Pedro, and as far north and west as Redondo Beach Transit information (bus, rail, and bike share) 323-466-3876, www.Metro.net

San Pedro DASH Bus route information

www.LADOTtransit.com/dash/routes/SanPedro/sanpedro.html

Commuter Express Route 142 to Long Beach information

www.LADOTtransit.com/comexp/routes/142/142.html

San Pedro Visitor Center
479 W. 6th Street
Downtown San Pedro
310-729-9828

Urban Feet  **Skate**
Shoes & Clothing Equipment



Skateboards and
Accessories



Nike SB
Vans
Converse
Sanuk
Reef
Rainbow
Toms
Ugg
Dr. Martens
Redwing

329 W 6th Street

San Pedro CA 90731

310.832.9364



CABRILLO WAY MARINA Southern California's Newest Marina

Marina Amenities

- 698 Slips from 28' - 130'
- 30' - 50' End Ties
- Guest Slips Available
- Dry Storage / Crane Launching
- On-site Security
- Free Wi-Fi

Shortest Run to Catalina

Marina: (310) 514-4985 • Dry Storage: (310) 521-0200
2293 Miner St., San Pedro, CA 90731

www.cabrilloway.com



Deadman's Island Lives On in the History of San Pedro's Los Angeles Harbor

It was even once a tourist attraction

A name like Deadman's Island evokes at least a couple of images.

For one there's the theatrical/fanciful/cartoon/amusement park kind of pirate lair. But for another, there's the historical chance that the name developed from its very real inhabitants.

There was a Deadman's Island at the entrance to the harbor at San Pedro—well before it was Los Angeles Harbor. For decades it was a landmark for mariners. But it didn't have a name until about 1810 when a body was found on it. The body belonged to someone who apparently had made his way to the island, but was unable to get across the wide channel to the mainland, and who probably died from exhaustion, exposure, thirst, or all of the above.

The body was discovered by local fishermen, who buried him atop the island and from that day forward named the site (depending on the source), "Isla del Muerto" or "Isla de los Muertos." It was later translated to the English Deadman's

Island.

In his book, *Two Years Before the Mast* published in 1840, Richard Henry Dana wrote about visiting Deadman's Island in San Pedro Bay in 1835 and mentions the burial there of a British whaling captain, whose cause of death was unknown.

The logs of Capt. Augustus Timms, founder of the harbor at San Pedro, also mention that a British mariner's body was taken off his ship and buried. But there is no word about how he died.

It was in 1901, though, when four local boys—identified by the *Los Angeles Times* as Mark and Howard Kelsey, Chester Silent, and Roy Bancroft—found the mariner's coffin and bones. They were fishing when the exposed bones caught their attention.

The exposure of the bones was a long time coming and had been the cause of discussion for quite some time.

Over the years the ocean's waves had worn away at the island's rock and soil, exposing at least one major hole that continued to be enlarged by

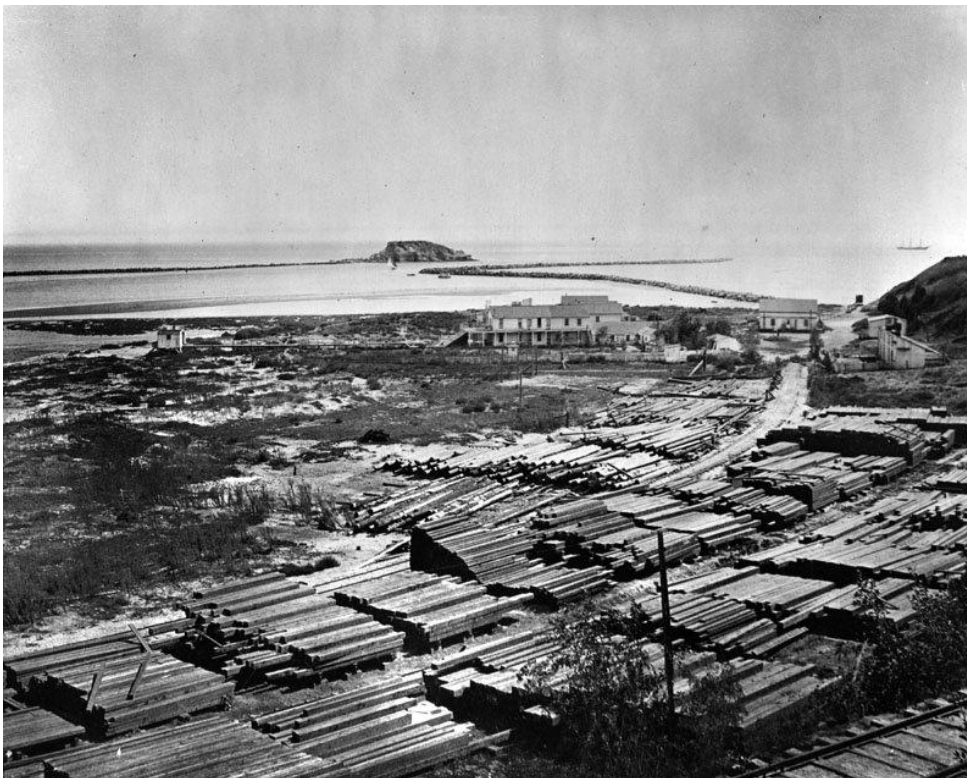
nature's forces, eventually resulting in the coffin and bones coming to the surface.

The boys said the coffin was in good shape, although its boards had fallen apart. And the bones had not scattered much from the coffin. Also, the relatively dry conditions under the surface of Deadman's Island appeared to help preserve the bones—and a rope.

The rope was found between the deceased's head and ribs and was apparently fashioned as a hangman's noose. None of the long-time local residents could recall the victim of a hanging being buried on the island and the cause of death of the ship's captain had been a mystery for a century. It was inferred from the evidence that the bones were those of the captain of the British whaling brig, that the ship's crew had hanged the captain during a mutiny, and that the sailors had buried his body on the island.

The overthrown captain was not, however, the only dead man on the island.

On October 7, 1846, the frigate *USS Savannah* arrived after helping to secure northern Califor



DEADMAN'S ISLAND—The rocky island is long gone, having been demolished to make the harbor entrance safer. But this legendary spot can be seen from Timm's Landing in the photo above. The lumber in the photo was a big part of Los Angeles Harbor's cargo. And the Pacific Electric Railway ad on the right shows that Deadman's Island was a tourist attraction around the turn of the 20th Century.

TOURIST SIDE TRIPS
ON THE
SALT LAKE ROUTE



To
Riverside, Ontario, Pomona and San Bernardino
Famous for their extensive Orange Groves and Famous Palm Drive.

To
Long Beach, Brighton Beach and Terminal Island
—the Queen Beaches of Southern California, where the Bathing, Boating and Kodaking are unequalled.

To
San Pedro Harbor
with its historical Deadman's Island and \$3,000,000 Government Breakwater.

To
Catalina—the Magic Isle
with its Submarine Gardens and Glass Bottomed Boats.
For further particulars call at
CITY TICKET OFFICE, 250 South Spring Street
Phones Home and Main 352

nia for the U.S. It came to San Pedro to try to recapture Los Angeles, which had been taken over by the Californios.

The first casualty from the Savannah was William Smith who died from the accidental discharge of a pistol soon after the ship arrived.

An expedition would set out for the pueblo and would encounter an opposition force on the Dominguez Rancho, about 10 miles north of San Pedro. This battle, called either the Battle of Dominguez Rancho or the Battle of Old Woman's Gun, would result in five more deaths.

These came about from a cannon named "Old Woman's Gun" that the local forces fired several times. It was a brass cannon with a bore of a little more than three inches that fired four-pound shot and was used for ceremonies. It was a very small gun, as cannons go, and had been a decoration in Dominguez family daughter-in-law Inocencia Reyes' garden. It was retrieved and mounted for battle. The first shot was reported to be ineffective because of faulty, locally produced, gun powder. But several subsequent shots hit their marks.

At the end, on October 9, the bodies of Michael Hoy, David Johnson, Charles Somers, and William B. Berry, were interred on Deadman's Island. On October 22, the body of Marine Henry Lewis was also buried there, although there is no record of how he died. It is presumed he died from disease on board the Savannah.

Perhaps ironically or perhaps fittingly, the cannon that killed the five men was brought to Deadman's Island on July 4, 1853 to fire a salute on Independence Day.

As the bodies were exposed in those later years, the remains of the military members were relocated to the Presidio in San Francisco; the remains of the civilians were reinterred at San Pedro's Harbor View Cemetery.

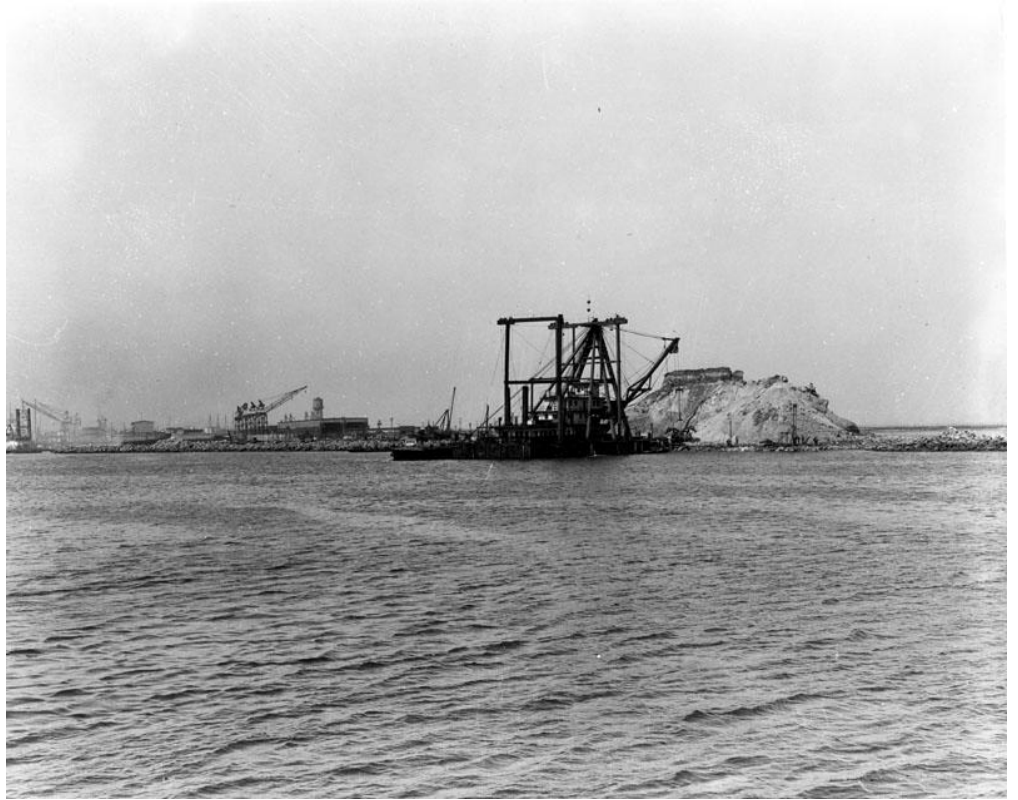
Finally, by 1928, as traffic in the harbor increased and the government decided various other enhancements to the facilities were needed, Deadman's Island became an impediment. It was viewed as a navigational hazard and, although it had at a couple of times in its history served as a whaling station, the rock itself served no real purpose.

It took the power of eight dredging barges, a steam shovel, and 20 train cars of dynamite and blasting powder to level the island. It gave up 2.3 million cubic yards of rock and dirt, which were used in the construction in surrounding areas of a customs house, Coast Guard station, and prison on the adjacent end of Rattlesnake Island, by then renamed Terminal Island. The new land created in

part from Deadman's Island is called Reservation Point.

Head down to the south end of the harbor and look to the east. You're likely to see one or more Coast Guard vessels there. They're at Coast Guard

Base Los Angeles/Long Beach. And perhaps on a particularly dark and maybe foggy night, you just might see the ghosts of the dead men of Deadman's Island.



VIEWS OF DEADMAN'S ISLAND—The photos at the top right shows the island as it was being dredged away sometime after 1928, when it was deemed to be a navigation hazard. The photo at lower right was taken on the bluffs above the Harbor before the lumber yard (shown on the photo on page 4) was built to take the place of this assortment of buildings.

Calendar of Events

San Pedro | LA Harbor Area | Palos Verdes Peninsula | Catalina Island

Tuesday, October 4

Wilmington Certified Farmers Market

Noon-6 p.m.

Hometown style farmers market with certified California-grown fruits, vegetables, assorted plants, and flowers. Fresh cooked food vendors along with arts, crafts, and jewelry. On L Street between Avalon Blvd. and Marine Avenue, Wilmington.

www.Providence.org/Locations/Community-health/Wilmington-Certified-Farmers-Market

Thursday, October 6

First Thursday Artwalk

5:30-9 p.m.

Downtown San Pedro's arts night out. Galleries and studios open, dining specials, entertainment. Between 4th & 9th Streets and Palos Verdes Street and Pacific Avenue, Downtown San Pedro.

www.1stThursday.com

Friday, October 7

Farmers Market

11 a.m.-3 p.m.

Fruits and vegetables from certified, small family farms. Get a head start on weekend meals with fresh options. Beacon Street between 6th and 7th Streets. 310-732-4545.

www.SanPedroChamber.com

Irish Music

7 p.m.

Ken O'Malley Irish Music and Padraic Conroy perform live at San Pedro's Irish pub. The Whale & Sale, 327 W. 7th Street, Downtown San Pedro. 310-832-0363. www.TheWhaleAndAle.com

Game Night

10 p.m.-1 a.m.

Pick out a board game and have fun with friends and new friends. Kitchen open until 10 p.m. San Pedro Brewing Company, 331 W. 6th Street, Downtown San Pedro. 310-831-5663.

www.SanPedroBrewing.com

Saturday, October 8 & Sunday, October 9

Malaga Cove Art on the Lawn Show

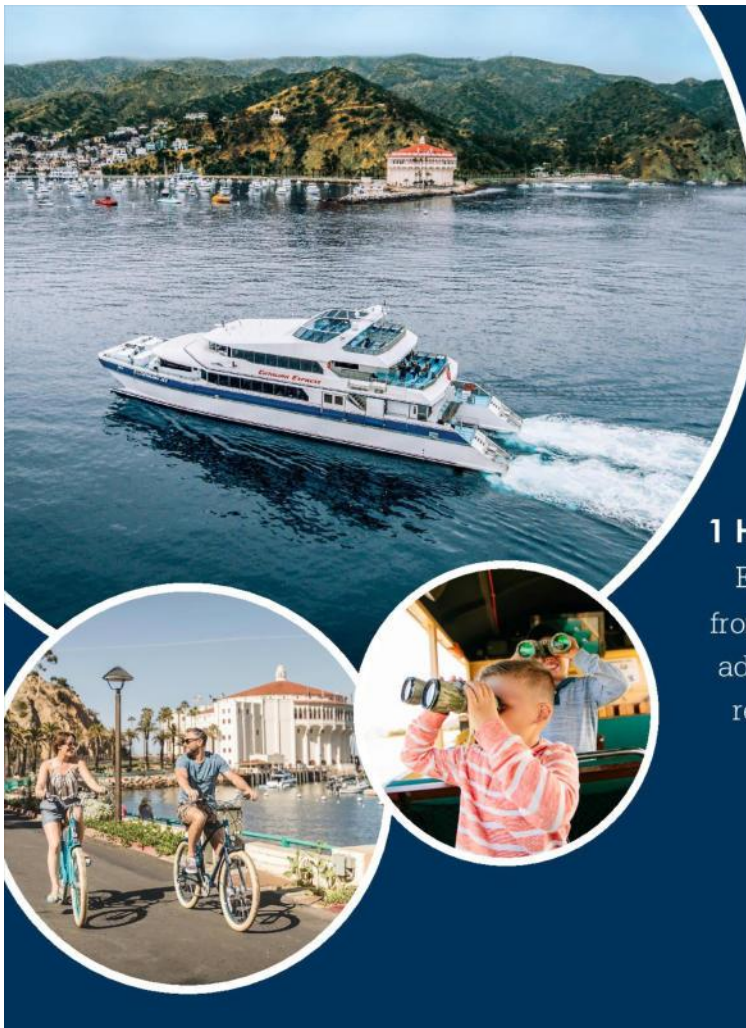
10 a.m.-5 p.m.

Art show featuring paintings, jewelry, ceramics, photography, wearable art, and prints from artists from the eight art groups affiliated with Palos Verdes Art Center. Malaga Cove Plaza, entrance on Palos Verdes Drive West, Palos Verdes Estates, Peninsula. www.PVArtCenter.org

Blue Hour 3: The Warehouse

5-9 p.m.

Blue Hour connects science, culture, and community by combining art and technology to tell the story of the emerging



Your Catalina
Island journey
begins with us.

1 HOUR BOAT RIDE. UP TO 30 DEPARTURES DAILY.

Experience Catalina Island, just an hour boat ride from Southern California's coast! Scenic beauty, high adventure activities, great dining or simply rest and relaxation. We offer up to 30 departures daily from San Pedro, Long Beach and Dana Point.

Take the trip for a day, or stay overnight with one of our Boat & Hotel packages.

CatalinaExpress.com | 800.742.8751

Blue Economy. AltaSea at the Port of Los Angeles, 2451 Signal Street, San Pedro Waterfront. 424-210-4973. www.AлтаSea.org

Sunset Cruise

6 p.m.

Cruise around Long Beach Harbor, past the Queen Mary and big blue water vessels. Dock 9, 435 Shoreline Village Drive, Long Beach. www.SpiritMarine.com

Also, Sunday, October 9

Last Dance

8 p.m.

A comedy farce in tribute to the grandeur of the American South and a musing on what a smart woman might really want in her later years. Little Fish Theatre, 777 S. Centre Street, Downtown San Pedro. 310-512-6030. www.LittleFishTheatre.org. \$30, \$28, \$20
Also, Sunday, October 9, 2 p.m.

Mirrored Vision

8 p.m.

Post-punk band from the Harbor area. Grand Annex, 434 W. 6th Street, Downtown San Pedro. 310-833-4813. www.GrandVision.org. \$120/\$100/\$20

Sunday, October 9

Culture Talks!

1-4 p.m.

Gregorio Luke will talk about the Art of Neruda in the relaunch of the San Pedro Waterfront Arts District Art Appreciation series. Cabrillo Marine Aquarium, 3720 Stephen M. White Drive, Cabrillo Beach, San Pedro Waterfront.

www.SanPedroWaterFrontArtsDistrict.com

Pennyroyal Players

3 p.m.

Performing "The Suffragette Musical: From Battles to Ballots" about women who dared to fight for their rights. Grand Annex, 434 W. 6th Street, Downtown San Pedro. 310-833-4813. www.GrandVision.org. \$132/\$28/\$23

Tuesday, October 11

Wilmington Certified Farmers Market

Noon-6 p.m.

Hometown style farmers market with certified California-grown fruits, vegetables, assorted plants, and flowers. Fresh cooked food vendors along with arts, crafts, and jewelry. On L Street between Avalon Blvd. and Marine Avenue, Wilmington.

www.Providence.org/Locations/Community-health/Wilmington-Certified-Farmers-Market

Thursday, October 13

Open Mic Night

7-9 p.m.

Acoustic singers, singer-songwriters, poets perform. To perform sign up at 6:30 p.m. Grand Annex, 434 W. 6th Street, Downtown San Pedro. 310-833-4813. www.GrandVision.org

Saturday, October 15 & Sunday, October 16

Tour d'Art

Times vary

Self-guided tours of artist studios located on the Palos Verdes Peninsula hosting more than 40 local artists. Refreshments at each location. Palos Verdes Art Center, 5504 Crestridge Road, Rancho Palos Verdes, Peninsula. www.TASPV.com

Friday, October 14

Farmers Market

11 a.m.-3 p.m.

Fruits and vegetables from certified, small family farms. Get a head start on weekend meals with fresh options. Beacon Street between 6th and 7th Streets. 310-732-4545.

www.SanPedroChamber.com

Irish Music

7 p.m.

Ken O'Malley Irish Music and Padraic Conroy perform live at San Pedro's Irish pub. The Whale & Sale, 327 W. 7th Street, Downtown San Pedro. 310-832-0363. www.TheWhaleAndAle.com

Game Night

10 p.m.-1 a.m.

Pick out a board game and have fun with friends and new friends. Kitchen open until 10 p.m. San Pedro Brewing Company, 331 W. 6th Street, Downtown San Pedro. 310-831-5663.

www.SanPedroBrewing.com

Saturday, October 15

Sensory Sensitive Saturdays

10 a.m.-Noon

Quiet time at the Cabrillo Marine Aquarium. Sensory bags with helpful items available at the welcome booth. Cabrillo Marine Aquarium, 3720 Stephen M. White Drive, Cabrillo Beach, San Pedro Waterfront. 310-548-7562. www.CabrilloMarineAquarium.org

For a full guide to the area go to
www.VisitSanPedro.org



**Buy Direct
From
Local Artists
and Save!**

Come shop the huge selection of handmade arts and crafts
at the San Pedro Art Association booths at

Crafted at the Port of Los Angeles
112 E. 22nd St in San Pedro

Open Friday-Saturday-Sunday 11am to 7pm
Free Admission and Parking

Mention this ad and receive five dollars off a purchase
of twenty-five dollars or more from an individual artist.
(Not valid on sale or discounted items)

For more information call or text 310-400-9659; visit sanpedroart.org
or our Facebook pages (search San Pedro Art Association)

White Point Nature Walk

10:30 a.m.

Naturalists will guide participants along a trail to discover a unique variety of wildlife in their coastal sage scrub habitat with amazing views across to the ocean. Meet in front of the Nature Center, 1600 Paseo del Mar, Peninsula. Park in the lot at the dead end. 310-561-0917, www.PVPLC.org

Saturday, October 15 & Sunday, October 16

FESTA Italiana

Saturday, 5-10 p.m.

Sunday, 2-7 p.m.

Authentic Italian vendors and entertainers. Little Italy, 222 W. 6th Street, Downtown San Pedro. www.LILAA.org

Saturday, October 15

California Watershed: Healing

4 p.m.

Screening of film that shows the current reality of California's forests and suggests solutions to restore and health the watershed. Warner Grand Theatre, 478 W. 6th Street, Downtown San Pedro. www.GrandVision.org. Free

Patrick Landeza & Sons

8 p.m.

New musical group playing Hawaiian slack key guitar music led by two-time winner of the Nā Hōkū Hanohano Award. Grand Annex, 434 W. 6th Street, Downtown San Pedro. 310-833-4813, www.GrandVision.org. \$132/\$112/\$23

Friday, October 21

Farmers Market

11 a.m.-3 p.m.

Fruits and vegetables from certified, small family farms. Get a head start on weekend meals with fresh options. Beacon Street between 6th and 7th Streets. 310-732-4545, www.SanPedroChamber.com

Irish Music

7 p.m.

Ken O'Malley Irish Music and Padraic Conroy perform live at San Pedro's Irish pub. The Whale & Sale, 327 W. 7th Street, Downtown San Pedro. 310-832-0363, www.TheWhaleAndAle.com

Game Night

10 p.m.-1 a.m.

Pick out a board game and have fun with friends and new friends. Kitchen open until 10 p.m. San Pedro Brewing Company, 331 W. 6th Street, Downtown San Pedro. 310-831-5663, www.SanPedroBrewing.com

Saturday, October 22

17th Annual Happy Harbor Halloween

11 a.m.-2 p.m.

Variety of children's activities to celebrate Halloween including a pet parade. San Pedro Town Square, 6th Street & Harbor Blvd., San Pedro Waterfront. www.LAWaterfront.org

Harvest Cruise

5-7:30 p.m.

Celebrate the fall harvest season on a tall ship and watch the sunset. Sit back and relax or become a part of the crew. Los Angeles Maritime Institute, Berth 73, San Pedro Waterfront. 310-833-6055, www.LAMITopSail.org. \$60/\$30

Tuesday, October 18

Wilmington Certified Farmers Market

Noon-6 p.m.

Hometown style farmers market with certified California-grown fruits, vegetables, assorted plants, and flowers. Fresh cooked food vendors along with arts, crafts, and jewelry. On L Street between Avalon Blvd. and Marine Avenue, Wilmington. www.Providence.org/Locations/Community-health/Wilmington-Certified-Farmers-Market

Sunday, October 23

Coco

2 p.m.

Free showing of the Disney Pixar film in homage to the Día de Los Muertos celebration. Warner Grand Theatre, 478 W. 6th Street, Downtown San Pedro. www.grandvision.org/event/disneys-coco-2017free-film-screening. Free

Día de los Muertos-Downtown

2-8 p.m.

Festival featuring live music, altar completions, craft vendors, and food. Along 6th Street, Downtown San Pedro. www.SanPedroDayOfTheDead.com

Tuesday, October 25

Wilmington Certified Farmers Market

Noon-6 p.m.

Hometown style farmers market with certified California-grown fruits, vegetables, assorted plants, and flowers. Fresh cooked food vendors along with arts, crafts, and jewelry. On L Street between Avalon Blvd. and Marine Avenue, Wilmington. www.Providence.org/Locations/Community-health/Wilmington-Certified-Farmers-Market

Wednesday, October 26

Gardena High School, 1919-19561

0:30 am-11:30 a.m.

Bruce Dalrymple will discuss how the Gardena High School art collection began and evolved. Followed by a gallery tour. Palos Verdes Art Center, 5504 Crestridge Road, Rancho Palos Verdes, Peninsula. www.PVArtCenter.org

Friday, October 28 & Saturday, October 29

Sea Scare

7-10 p.m.

Family-friendly "Into the Deep" themed event with costume contest, food trucks. Cabrillo Marine Aquarium, 3720 Stephen M. White Drive, Cabrillo Beach, San Pedro Waterfront. 310-548-7562, www.CabrilloMarineAquarium.org. \$15/\$12/\$8

Friday, October 28-Sunday, October 30

Clue

Times vary

Play based on the 1985 Paramount Pictures film. Warner Grand Theatre, 478 W. 6th Street, Downtown San Pedro. www.EncoreSouthBay.org. \$60/\$30

Friday, October 28, 7:30 p.m.; Saturday, October 29, 2 p.m.; Sunday, October 30, 2 p.m.

Friday, October 28

Farmers Market

11 a.m.-3 p.m.

Fruits and vegetables from certified, small family farms. Get a head start on weekend meals with fresh options. Beacon Street between 6th and 7th Streets. 310-732-4545, www.SanPedroChamber.com

Irish Music

7 p.m.

Ken O'Malley Irish Music and Padraic Conroy perform live at San Pedro's Irish pub. The Whale & Sale, 327 W. 7th Street, Downtown San Pedro. 310-832-0363, www.TheWhaleAndAle.com

Game Night

10 p.m.-1 a.m.

Pick out a board game and have fun with friends and new friends. Kitchen open until 10 p.m. San Pedro Brewing Company, 331 W. 6th Street, Downtown San Pedro. 310-831-5663, www.SanPedroBrewing.com

The information in this calendar comes from a wide range of sources and may not necessarily have the most current details. Please contact the producers for the latest status on their events

For updated event information, go to
www.VisitSanPedro.org

The Visitor Center—and much more!

*Home to The Nautical Shop
Ocean liner & maritime collectibles
Fine china*



In the Historic Arcade Building
479 W. 6th Street, Suite 101, Downtown
310-729-9828

Churches & Spiritual Organizations



Community Christian Church
Relationship, Not Religion
1903 W. Summerland Drive
Rancho Palos Verdes
310-832-7304
www.cccrpv.org



The Garden Church
Worshiping, loving and serving together
429 W. 6th Street
Downtown
www.GardenChurchSP.org



San Pedro United Methodist Church
Open Hearts, Open Minds,
Open Doors
580 W 6th Street
San Pedro
310-548-1001
www.SanPedroUMC.org



Temple Heights Southern Baptist Church
We would love to meet you!
888 Hamilton Avenue
San Pedro
310-831-5446



Ministerios Torrente de Besor
Services Sundays at 9 a.m.
and 5 p.m. in Spanish
1491 W. O'Farrell Street
San Pedro
310-901-5490



Christ Lutheran Church
Set your minds on things above, not on earthly things
28850 S. Western Avenue, Rancho Palos Verdes, Peninsula
310-831-0848
www.ChristRPV.com



327 West 7th Street Downtown San Pedro

Award-winning dishes. Best in LA Best fish & chips, shepherd's pie, and more

www.WhaleAndAle.com 310 832 0363

Entertainment



Sebastian's Mediterranean Cuisine
376 west 6th street
San Pedro, CA 90731
(310) 684-1351
www.SebastiansMC.com



399 W. 6th Street
Downtown San Pedro
310-241-1400 www.NikosPizzeria.com

Raffaello Ristorante

457 W. 7th Street, Downtown San Pedro
(310) 514-0900 www.RaffaelloRistorante.com

Babouch
MOROCCAN RESTAURANT

810 S. Gaffey Street
310-831-0246,
www.BabouchMoroccan.com
Group parties, belly dancing.
Happy Hour all night Tuesday



Sandwiches, Salads, & More!
1902 S Pacific Ave.
San Pedro
(424) 264-5322
www.WestCoastPhillys.com



SERVING WORLD FAMOUS CHILI DOGS, CORN DOGS,
AND CHILI CHEESE FRIES
230 N. Gaffey Street,
San Pedro, CA 90731
(310) 831-4486

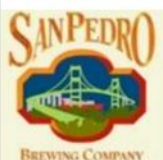


At the top of Historic Downtown
Sandwiches, salads, entrees, and all your favorites Breakfast served all day
605 S. Pacific Ave Ste 103 (310) 547-0961
www.WeLoveSPC.com



141 West 22nd St.
On the marina
310-548-4400

<http://22ndstlandingrestaurant.com> Award winning seafood



Warm, friendly neighborhood pub atmosphere. Award-winning food and beer
331 W. 6th St.
(310) 831-5663 www.SanPedroBrewing.com



1110 N. Gaffey St Ste G
Northwest San Pedro
(310) 732-5800
BigNicksPizza.com



Sacred Grounds

Great coffee • good vibes • sandwiches • salads • pastries
468 W 6th St, San Pedro
Next to the Warner Grand Theatre
(310) 514-0800



1118 W. 37th St. San Pedro
Ph (310) 832-2424 • Fax (310) 832-4356
Big selection of classic soda pop,
beer & wine, great toys,
art, sandwiches, and more



Legendary hamburgers and more
Berth 73, San Pedro Waterfront
310-547-5022 www.facebook.com/Utros



100 Terranea Way
Rancho Palos Verdes
866-802-8000 www.Terreanea.com
Nine different dining venues, each with a great
ambiance and stunning views of the Pacific Ocean



Once you have it ... You'll love it! Breakfast Served All Day!
617 S Centre St, Downtown Happy Deli 530 S. Gaffey Street 424-364-0319, www.HappyDeliSP.com
310-241-0917 www.HappyDinerSP.com

San Pedro Visitor Center 479 W. 6th Street, Suite 101, Downtown
www.VisitSanPedro.org

The Directory **Where to Dine, Shop, Experience, Enjoy**

San Pedro | Harbor | Peninsula | Catalina Island

Art/Galleries/Museums

The Banning Museum, 401 E. M Street, Wilmington. 310-548-2005.
www.TheBanningMuseum.org
Cabrillo Marine Aquarium, 3720 Stephen M. White Drive, Cabrillo Beach. 310-548-7562. www.CabrilloMarineAquarium.org
Catalina Island Museum, 217 Metropole Avenue, Avalon, Catalina Island. 310-510-2414. www.CatalinaMuseum.org
Downtown Books & Gallery, 414 W. 6th Street, Downtown San Pedro. 818-731-1158. www.DTBooksArt.com
Little Fish Theatre, 777 S. Centre Street, Downtown San Pedro. 310-512-6030. www.LittleFishTheatre.org
Mario's Art Gallery, 2438 S. Western Avenue, Peninsula. 310-548-9077. www.MarioMirkovichFineArt.com
San Pedro Art Association at CRAFTED, 112 E. 22nd Street, Waterfront. 310-831-2928. www.SanPedroArt.org
Warner Grand Theatre, 478 W. 6th Street, Downtown San Pedro. 310-548-7672. www.WarnerGrand.org

Food/Dining/Nightlife

Whale & Ale Irish Restaurant & Pub, 327 W. 7th Street, Downtown San Pedro. 310-832-0363. www.WholeAndAle.com
Babouch Moroccan Restaurant & Lounge, 810 S. Gaffey Street, San Pedro. 310-831-0246. www.BabouchMoroccan.com
Big Nick's Pizza, 1110 N. Gaffey Street, Suite G, Northwest San Pedro. 310-732-5800. www.BigNicksPizza.com
22nd Street Landing Seafood Grill and Bar, 141-A W. 22nd Street, Cabrillo Marina, San Pedro Waterfront. 310-548-4400. <http://22ndstlandingrestaurant.com/>
The Corner Store, 1118 W. 37th Street, Pt. Fermin, Peninsula. 310-832-2424
Godmothers Saloon, 302 W. 7th Street, Downtown San Pedro. 310-833-1589
Happy Deli, 530 S. Gaffey Street, Downtown San Pedro. 424-364-0319. www.HappyDeliSP.com
Happy Diner American diner and Mexican, 617 S. Centre Street, Downtown San Pedro. 310-833-6799. www.HappyDinerSP.com
Happy Diner #2, 1931 N. Gaffey Street, NW San Pedro. 310-935-2933
Harborview Event Center at Ft. MacArthur LA AFB, Hayley Strozier, 310-653-8341, Hayley.Strozier@us.af.mil or Patti Orbeck 310-653-8255. www.LAFSS.com/Harborview
Niko's Pizzeria, 399 W. 6th Street, Downtown San Pedro. 310-241-1400. www.NikosPizzeria.com
Raffaello Ristorante, 457 W. 7th Street, Downtown San Pedro. 310-514-0900. www.RaffaelloRistorante.com
Sacred Grounds coffee house, salads, sandwiches, 468 W. 6th Street, Downtown San Pedro 310-514-0080
San Pedro Brewing Company, 331 W. 6th Street, Downtown San Pedro. 310-831-5663. www.SanPedroBrewing.com
San Pedro Café, 605 S. Pacific Avenue Suite 103, Downtown San Pedro. 310-547-0961. www.WeLoveSPC.com
Sebastian's Mediterranean Cuisine, 376 W. 6th Street, Downtown San Pedro. 310-684-1351. www.SebastiansMC.com
Terranea Resort eight dining venues, 100 Terranea Way, Rancho Palos Verdes. 866-802-8000. www.Terranea.com
Utro's at the Wharf great hamburgers and more, Berth 73, San Pedro Waterfront. 310-547-5022. www.facebook.com/Utros
Vons Grocery Store food, liquor, wine, beer sundries, 1221 S. Gaffey Street, San Pedro. 310-832-7063. www.Vons.com
Wienerschnitzel, 230 N. Gaffey Street, San Pedro. 310-831-4486. www.Wienerschnitzel.com

Maritime/Boating

Los Angeles Yacht Club, 285 Whalers Walk, Cabrillo Marina. 310-831-1203. www.LAYC.org
Cabrillo Way Marina, 2293 Miner Street, Cabrillo Way Marina. 310-514-4985. www.CabrilloWay.com
Los Angeles Maritime Institute—Official LA Tall Ships, Berth 73, Suite 2, San Pedro Waterfront. 310-833-6055. www.LAMITopSail.org

Recommended Hotels

Terranea Resort, 100 Terranea Way, Rancho Palos Verdes. 866-802-8000.

www.Terranea.com

DoubleTree by Hilton, 2800 Via Cabrillo Marina San Pedro Waterfront. 310-514-3344

Shopping & Services

Alexander Felix Insurance Agency, 807 S. Gaffey Street, San Pedro. 424-536-3091. www.afia.agency
Black Knight Patrol, 505 S. Pacific Avenue, Downtown San Pedro. 213-985-6499. www.BlackKnightPatrol.com
Bringelson Jewelers, 461 W. 6th Street, Downtown San Pedro. 310-832-5482. www.FaceBook.com/BringelsonJewelers
International Motors quality used cars and service, 1600 S Pacific Avenue, San Pedro. 310-519-3687. www.SanPedroCars.net
Rok 'n' Ell Baby Boutique & More, 1438 W 8th Street, Weymouth Corners. 310-832-4145. www.RoknEllBaby.com
Round Trip Collective, 617 S. Mesa Street, Downtown. 310-935-8295. www.RoundTripCollective.com
Urban Feet & Skate, 329 W. 6th Street, Downtown San Pedro 310-832-9364. www.UrbanFeetAndSkate.net

Health, Fitness, & Recreation

Catalina Express, Berth 95, San Pedro Waterfront; Catalina Landing, Long Beach. 800-481-3470. www.CatalinaExpress.com
Belmont Shore Railroad Club, Angels Gate Park, 3601 S. Gaffey Street, Peninsula. 310-831-6262. www.BelmontShoreRR.com
Dr. Ja'nae Brown, PT, DPT physical therapy. 310-548-5984. www.DRJanaeBrownPT.com
Spirit Cruises, Dock 9, Shoreline Village, Long Beach. 310-548-8080. www.SpiritMarine.com

Tours & Transportation

Sunseeker Tours, sightseeing Hollywood/Los Angeles. 877-416-5460. tours@sunseekertours.com. www.SunseekerTours.com

Our Community

Christ Lutheran Church & School, 28850 S. Western Avenue, Rancho Palos Verdes, Peninsula 310-831-0848. www.ChristRPV.com
Community Christian Church, 1903 W. Summerland Drive, Rancho Palos Verdes. 318-832-7304. www.CCCRPV.org
The Garden Church, 429 W. 6th Street, Downtown San Pedro. 310-929-0547. www.GardenChurchSP.org
Holy Trinity School & Preschool, 1226 W. Santa Cruz Street, San Pedro 310-833-0703. www.SchoolHolyTrinitySP.org
Ministerios Torrente De Besor 1491 W. O'Farrell Street, San Pedro. 310-350-7892, 310-901-5490. www.Facebook.com/Ministerios-torrente-de-besor-683464268506055/posts
San Pedro United Methodist Church, 580 W 6th Street. 310-548-1001. www.SanPedroUMC.org
Random Lengths News, 1300 S. Pacific Avenue 310- 519-1016. www.RandomLengthsNews.com
San Pedro Chamber of Commerce, 390 West 7th Street, Downtown San Pedro 310-832-7272. www.SanPedroChamber.com
Temple Heights Southern Baptist Church, 888 W. Hamilton Avenue, San Pedro 310-831-5446. www.Facebook.com/TempleHeightsSanPedro
The Vue Apartments, 255 W. 5th Street, Downtown San Pedro 866-585-1972. www.TheVueResidences.com

San Pedro Visitor Center

479 W. 6th Street, Suite 101, Downtown San Pedro

424-364-6865

www.VisitSanPedro.org

THE WHALE & ALE

SAN PEDRO'S
IRISH PUB & RESTAURANT



Fish & Chips



Shepherd's Pie



WHINEY
WEDNESDAYS



1/2 OFF WHISKEY &
BOTTLES OF WINE



HAPPY HOUR

MONDAY-FRIDAY 4PM-6PM

REVERSE

HAPPY HOUR

SATURDAY 8PM - 10PM
& SUNDAY 7PM - 9PM



327 W 7TH STREET SAN PEDRO, CA 90731
(310) 832-0363 | WWW.THEWHALEANDALE.COM

FOLLOW US ON SOCIAL MEDIA @WHALEANDALESP FOR OUR LIVE MUSIC SCHEDULE & UPCOMING EVENTS